

INSERT DATA 2010

“Read, used and valued by 132,168* HR and Training professionals every fortnight”

*ABC average net circulation July 2008 – June 2009

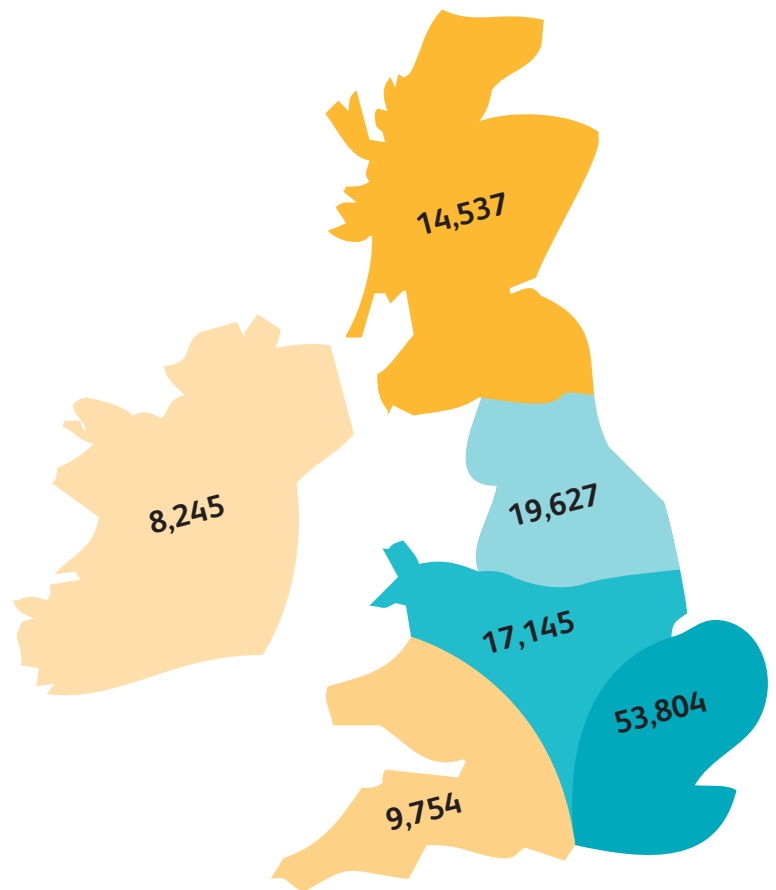
www.peoplemanagement.co.uk
People
 management



Insert options include: loose inserts, bound-in, tip-ons, creative inserts and cover mounts. Please contact a member of the sales team for prices on inserts based on weight and geographical areas on **020 7880 7665**.

PEOPLE MANAGEMENT INSERTS - REGIONAL BREAKDOWN

Code	Areas covered	Circulation
AA	Mid & North Anglia, Beds & Milton Keynes, Essex, Ipswich & East London	10,245
AB	North London, Herts, Central London	12,893
AC	Thames Valley, West London, Swindon & North Wilts, Chiltern	10,795
AD	South London, Kent, SE Thames, Wessex, SW London, Sussex, Central Southern	19,871
BB	Birmingham, Coventry & Warks, Derby & Notts, Leics, black Country, N Staffs & S Cheshire, Northants, Hereford & Worcs, Shropshire & Mid Wales, Lincs	17,145
CC	Humber, W Yorks, Lancs, Manchester, Merseyside & N Wales, S Yorks, N Yorks	19,627
DD	Cumbria, N Scotland & Islands, SE Scotland, NE, Tees Valley, W of Scotland, Mid Scotland	14,537
EE	W of England, SE Wales, SW Wales, Devon & Cornwall, Gloucs	9,754
EF	Northern Ireland, EIRE	8,245



ALL INSERT BOOKINGS ARE PROVISIONAL UNTIL A SAMPLE IS RECEIVED AND ACCEPTED BY PPL.

Personnel Publications Ltd | 17 Britton Street | London EC1M 5TP
 T 020 7880 7665 F 020 7880 7690 E display@peoplemanagement.co.uk

“People Management is the quality marketplace where the best brands advertise”

“Read, used and valued by 132,168* HR and training professionals every fortnight”

* ABC average net circulation July 2008 – June 2009



PEOPLE MANAGEMENT INSERTS TARGET CIPD MEMBERS BY JOB LEVEL

Suppliers can now target People Management’s readership by their job level. So whether you want your marketing documents to be received by CIPD members working at manager level and above, or just target those at director level we have the solution for you.

Insert options include: loose inserts, bound-in inserts* and postcards mounted to the front cover.** Please contact a member of the sales team on 020 7880 7665 to discuss your needs.

JOB LEVEL BREAKDOWN

Job level
Director
Senior executive
In-house consultant
Manager
Senior officer
Officer
Administrator/assistant
Independent consultant

INSERT COSTS

No of inserts	Up to 10g	11-20g
Up to 10,000	£3,000	£3,150
10,001 - 20,000	£3,500	£3,750
20,001 - 30,000	£4,500	£4,950
30,001 - 40,000	£5,000	£5,500
40,001 - 50,000	£5,500	£6,250
51,001 - 60,000	£6,000	£7,150
60,001+	POA	POA

*Add 10% to above costs for bound-in inserts

**Add 20% to above costs for postcards

“Read, used and valued by 132,168* HR and training professionals every fortnight”

* ABC average net circulation July 2008 – June 2009

PEOPLE MANAGEMENT INSERTS-TARGET CIPD MEMBERS BY THEIR BUSINESS INTERESTS

Suppliers can now target People Management’s readership by the HR disciplines that they are most interested in. So whether you want your marketing documents to be received by only those HR professionals with an interest in employment law, or just those with an interest in recruitment and selection we have the solution for you.

Insert options include: loose inserts, bound-in inserts* and postcards mounted to the front cover.** Please contact a member of the sales team on 020 7880 7665 to discuss your needs.

CIPD MEMBER’S MAIN BUSINESS INTERESTS

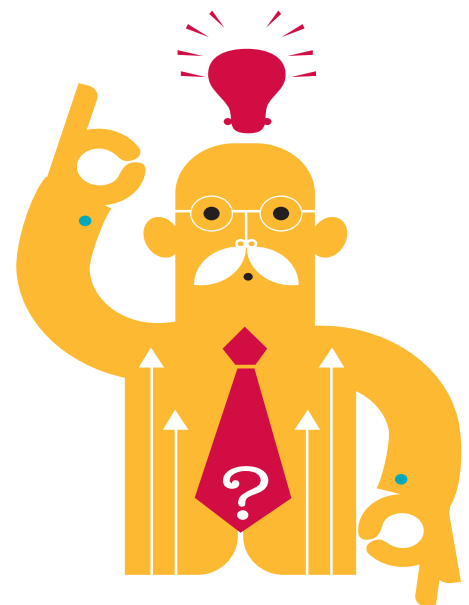
Interest	Technology based training incl. e-learning	Pensions	Career management
Recruitment & selection	Flexible/open learning	Health & safety	Internal communications
Employee services & conditions	Training design	Retention	Organisation design
Reward management	Talent Management	Equal opportunities & diversity	Shared services (including HR outsourcing)
Public policy	Direct training/training delivery	Occupational psychology	Employee engagement/ employer branding
Job evaluation	Coaching/mentoring	Quality assurance	Employee well-being
HR planning	Management development	Knowledge management	Corporate social responsibility/ sustainability
Industrial relations/trade unions	Organisation development	International HR	Strategic HR
Employment law	Lecturing, research (HR/training related)	Change management	

INSERT COSTS

No of inserts	Up to 10g	11-20g
Up to 10,000	£3,000	£3,150
10,001 - 20,000	£3,500	£3,750
20,001 - 30,000	£4,500	£4,950
30,001 - 40,000	£5,000	£5,500
40,001 - 50,000	£5,500	£6,250
51,001 - 60,000	£6,000	£7,150
60,001+	POA	POA

*Add 10% to above costs for bound-in inserts

**Add 20% to above costs for postcards



“Read, used and valued by 132,168* HR and Training professionals every fortnight”

* ABC average net circulation July 2008 – June 2009

SPECIFICATIONS

- ◆ Total required for full run UK 122,000
- ◆ Min size for loose inserts 105mm x 128mm
- ◆ Min weight for single sheet 100gsm
- ◆ Max size for loose inserts Portrait* 210mm x 270mm
- ◆ Max size for loose inserts Landscape* 270mm x 210mm
- ◆ Inserts must be single piece items
- ◆ Max of 7 onset or inserted inserts per issue. This includes supplements and excludes bound in inserts
- * ANY OUT OF SPEC INSERTS WILL BE ONSET
- * ANY A4 INSERTS MUST BE SUPPLIED FOLDED

SAMPLES

- ◆ Samples must be received at PPL one week before delivery date
 - ◆ A PDF by email or post: FAO Production Department, People Management, 17 Britton Street, London EC1M 5TP. Tel: 020 7880 6240
- All insert bookings are provisional until a sample is received and accepted by PPL.

DELIVERY INSTRUCTIONS

IMPORTANT INFORMATION

It is essential to notify Priority Mailing prior to delivery.

Delivery Contact: Kevin Poore on 01725 515016
 Alternative delivery dates can be given by special arrangement.

All packages to be clearly marked with:

- ◆ People Management
- ◆ Publication Date
- ◆ Name of Advertiser
- ◆ No. of inserts in each package
- ◆ Sample insert

A delivery note must accompany goods, even if a contracted courier is used. It must state the name of publication and issue date, total quantity delivered, total number of pallets/cartons.

Delivery Times:

8.30am – 4.00pm

Inserts for delivery to:

Priority Mailing
 Unit 5, Downton Business Centre
 Batten Road, Downton, Sailsbury, SP5 3HU

ANY QUERIES OR PROBLEMS CONCERNING DELIVERY SHOULD BE DIRECTED IN THE FIRST INSTANCE TO PRODUCTION ON 020 7880 6240, NOT PRIORITY MAILING. FAILURE TO COMPLY COULD RESULT IN DELAYS IN THE SCHEDULE AND ADDITIONAL COSTS. PLEASE NOTE ANY DAMAGED GOODS OR DELIVERIES NOT CONFORMING TO SPECIFICATION WILL NOT BE ACCEPTED.

PALLETS/CARTONS

Must not exceed a loaded size of 1300mm x 650mm x 100mm (52" x 25.5" x 40"). Must have a solid base and runners with a similar sized wooden top. Decks should be covered with card prior to loading. If shape or size prevents materials being adequately palletised, they may be supplied in cartons. They must be neatly packed in rows, in turns of 15-20cm, with dividers between rows. Vertical carton layers may be separated by card.

PACKING INSERTS

Should be well jogged and brick-stacked in lifts of 15-30cm with folded edges facing in the same direction, preferably towards the centre of the pallet and the same top page up. Minimum 100 inserts per turn. Should be recessed from the pallet edge and further protected against impact and moisture damage by shrinkwrapping and banding.

INSERT BOOKING & DELIVERY SCHEDULE

Issue	Publication date	Samples to PPL	Delivery date
1	14th January	22nd December	5th January
2	28th January	13th January	19th January
3	11th February	27th January	2nd February
4	25th February	10th February	16th February
5	11th March	24th February	2nd March
6	25th March	10th March	16th March
7	8th April	23rd March	29th March
8	22nd April	7th April	13th April
9	6th May	21st April	27th April
10	20th May	5th May	11th May
11	3rd June	19th May	25th May
12	17th June	2nd June	8th June
13	1st July	16th June	22nd June
14	15th July	30th June	6th July
15	29th July	14th July	20th July
16	12th August	28th July	3rd August
17	2nd September	18th August	24th August
18	16th September	1st September	7th September
19	30th September	15th September	21st September
20	14th October	29th September	5th October
21	28th October	13th October	19th October
22	11th November	27th October	2nd November
23	25th November	10th November	16th November
24	9th December	24th November	30th November
25	23rd December	8th December	14th December